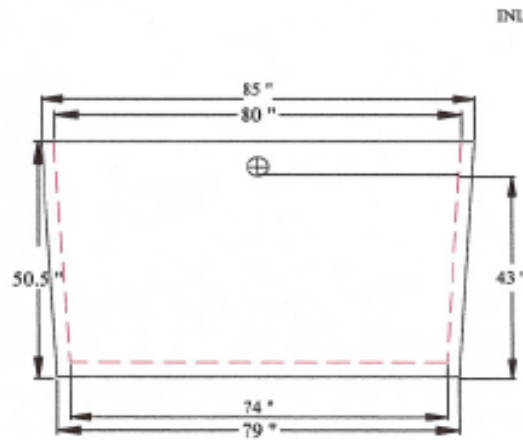
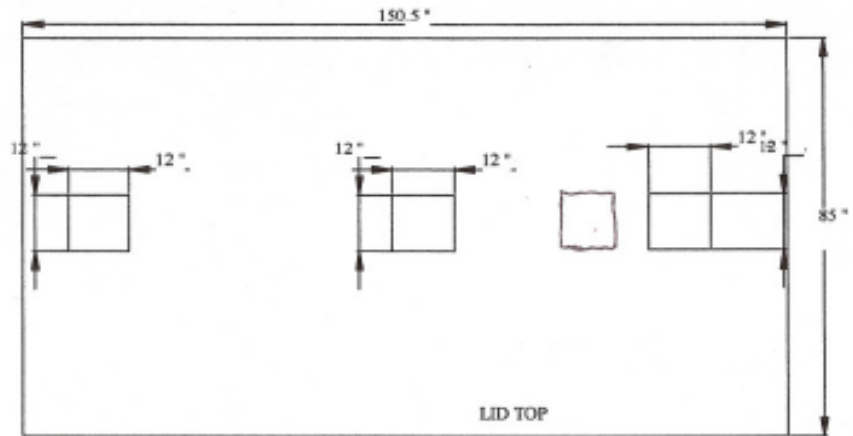


MINIMUM 6,000 PSI CONCRETE

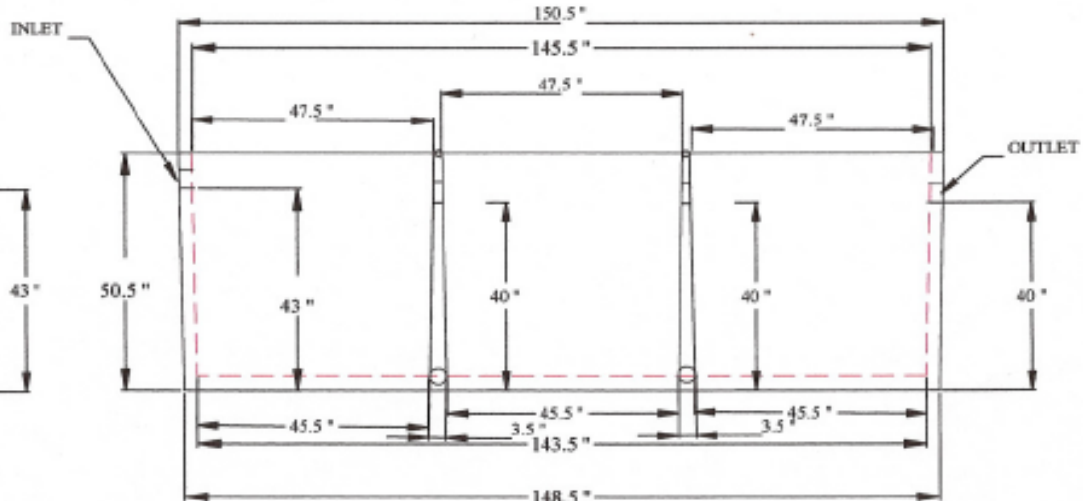
#3 REBAR REINFORCED CONCRETE
IN LID AND BENT FROM BOTTOM
INTO SIDES

#3 REBAR REINFORCED CONCRETE
THROUGH CENTER OF SEPTIC
TANK

2 1/2" WALL
3" BOTTOM
4" TOP



RIGHT SIDE VIEW



FRONT VIEW

RJW Precast

www.rjwprecast.com

PO BOX 777

Hillsboro, Texas 76645

254-582-8777 Office

254-582-7585 Fax

1500G- 3 compartment
